



Winter 2024 ROQCstar News

In This Issue:

MROQC Holiday Message & Hours | MROQC 2024:Year in Review| Important 2025 Reminders & Updates | M-EQUAL Education Series: SDOH| February CWM | Upcoming MROQC Meetings & Events

**WE WILL BE
CLOSED**
For the holidays!

CLOSED

Monday, December 23, 2024- Friday, January 3, 2025

REOPENING

Monday, January 6, 2025

During this time, support will not be available.
We wish our members and partners the happiest of holidays and thank you for your dedication to improving the quality of radiation therapy across Michigan.

As we look ahead to 2025, our 14th year, we are excited to continue this important work together!

Happy Holidays

MROQC 2024: Year in Review

PROSTATE WORKING GROUP

1000+ PATIENTS
ENROLLED

Facility
Monthly Reports
available on MROQC
website!



NEW
WEBSITE
LAUNCHED!

Average
Overall
Audit
Score **98%**



This year has truly been full of remarkable achievements! We ROQC!!!

Important 2025 Reminders & Updates!

As we approach the start of the 2025 measurement period, the Coordinating Center has been hard at work refining resources, updating forms, and streamlining processes to support you in delivering exceptional care.

Below are some key updates and reminders to help you transition smoothly into the New Year. We welcome your questions and feedback at support@mroqc.org.

Data Deadlines

- **2024 P4P Deadline:** All data for 2024 patients (RT end dates between **1/1/24 and 9/30/24**) must be entered by **January 23, 2025** to qualify for the Pay for Performance (P4P) program.
- **2024 Case Volumes:** Enrolled cases to MROQC from **1/1/24-12/31/24** must be entered by **January 23, 2025** to count towards your facility's data abstraction payment.

2025 Quality Measures

Starting in 2025, patients will be categorized into the performance year based on their **RT start date** rather than their end date. This means the 2025 performance year will include patients with RT start dates between **1/1/25 and 9/30/25**.

For full details on all of the quality measures, please refer to the updated **MROQC 2025 Incentive Program Measure Criteria** document.

Enhanced Treatment Resources

The Resources section has been reorganized to group Treatment Resource materials by

working group/committee. New resources include:

- **Breast:** Prone Treatment
- **Bone Mets:** Reirradiation Resources
- **M-EQUAL:** Cannabis Education

Updated Physics & Dosimetry Materials

New and revised materials are now available, including:

- **Project-specific physics forms:** BRTD, LRTD, MRTD, and PRTD
- **Resources:** Physics Tip Sheet and TG-263 Structure Spreadsheet

Stay tuned for **consolidated website reports** launching in 2025!

Revamped Clinical Resource Materials

Extensive updates and additions have been made to clinical resources across all working groups. Highlights include:

- **Breast:** Updated Tip Sheet, B5 Word Version/Fillable PDF, and Data Dictionary
- **Lung:** Updated Tip Sheet, L4 Word Version/Fillable PDF, and SE1 Data Dictionary
- **Bone Mets:** Updated Tip Sheets, M1/M4 Word Versions/Fillable PDFs, M1/M4 Data Dictionaries, and Timepoint Collection Guide
- **Prostate:** Updated Tip Sheets, P3/P7 Word Versions, and SE1/P3/P6/P7 Data Dictionaries

To access these materials, navigate to **CDA** found under the *Data Abstraction* section of the website.

Prostate P7 Form and Matching Status Changes

Background

Over the past few years, MROQC has enhanced prostate cancer data collection by integrating data from the **Michigan Urological Surgery Improvement Collaborative (MUSIC)**. This integration has allowed for matching MUSIC patients with MROQC prostate data, enriching the dataset to improve patient outcomes.

However, recent changes to MUSIC's data collection processes have altered the type of information available to us. In response, adjustments have been made to the MROQC abstraction process to ensure continued collection of critical data for prostate cancer patients.

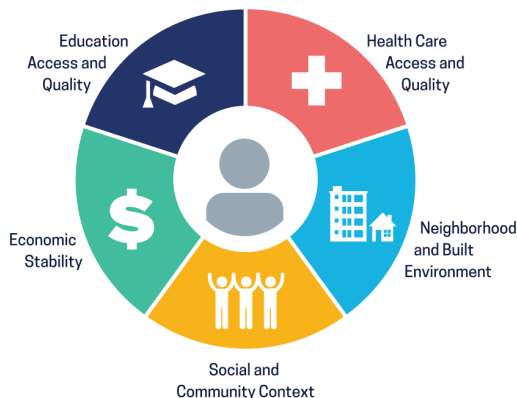
What is changing?

Starting **January 1, 2025**, facilities that do not currently complete the P7 form will now be required to do so. Facilities must also provide physics data for all eligible prostate patients born in **February, April, June, August, October, and December**. For these patients, the matching process with MUSIC will be bypassed.

These changes are vital to maintaining the quality of prostate cancer data collected across Michigan and supporting our mission to improve patient care.

We're here to support you in navigating these changes.
Be sure to keep visiting the **MROQC Website** for detailed resources and stay tuned for further updates.

Social Determinants of Health



Social Determinants of Health
Copyright free

Healthy People 2030

Understanding Social Determinants of Health (SDOH)

In our last newsletter, we highlighted the importance of understanding health equity. This quarter, we are focusing on Social Determinants of Health (SDOH)—a vital component of health equity.

Defined by the World Health Organization, SDOH are non-medical factors that influence health outcomes. They include the conditions in which people are born, grow, work, live, and age, as well as the broader systems and forces shaping these conditions. These forces encompass economic policies, development agendas, social norms, policies, and political systems.

Examples of SDOH that can impact a person's overall quality of life include:

1. Access to safe and affordable housing
2. Educational opportunities
3. Economic stability and job security
4. Availability of nutritious food
5. Access to quality healthcare services

Understanding these factors allows us to recognize the challenges patients may face in achieving optimal health outcomes and equips us to address health disparities more effectively.

Learn More About SDOH

For those interested in exploring this topic further, we encourage you to check out the following resources:

1. **ASCO Series: Social Determinants of Health and Cancer Care:** This video series explores the role of SDOH in cancer care and their impact on outcomes.
1. **American Medical Association Video on Addressing Social Determinants of Health:** Discover actionable strategies to address SDOH in clinical practice.

By increasing our understanding of SDOH, we can work together to create meaningful change and improve outcomes for all patients.

MROQC February 2025 Collaborative-Wide Meeting



When: Friday, February 28th
9:00am-12:00pm

Where: **Zoom Webinar**

**Registration will go out 1 month prior to the meeting date.*

Upcoming MROQC Meetings & Events

MROQC Working Groups



Monday, March 17 @ 12:00 p.m.



Thursday March 20th @ 12:00 p.m.



Tuesday, March 25th @ 12:00 p.m.



Thursday, March 27th @ 12:00 p.m.

Please click on the logo of the working group you are interested in for more information.

Interested in joining one of our working groups? Click [here](#).

CDA Office Hours

2nd Wednesday of the month 11:00 a.m. – 12:30 p.m.

*Look for emails every month to sign up.

Collaborative-Wide Meetings

February 28, 2025
9:00 a.m. to 12:00 p.m.
Virtual

May 16, 2025
10:00 a.m. to 3:00 p.m.
Kellogg Hotel, East Lansing, MI

October 10, 2025
10:00 a.m. to 3:00 p.m.
TBD

For more information, including past events and CE information, please visit the [Collaborative-Wide Meeting & Events](#) page.

Past Editions of MROQC News

Past editions of the “ROQCstar News” can be found on the
Media page of our [MROQC website](#).

Please email any comments, content suggestions or publications you would like to see in
future MROQC Newsletters to support@mroqc.org.



[MROQC](#) | [Contact Us](#) | [FAQs](#)

MROQC | Arbor Lakes 4251 Plymouth Road Building 2 Floor 3 | Ann Arbor, MI 48105 US

[Unsubscribe](#) | [Update Profile](#) | [Constant Contact Data Notice](#)



Try email marketing for free today!